

CERTIFICATE OF LOCATION OF GOVERNMENT CORNER

NORTH QUARTER Corner of Section 15, Township 105 N., Range 42 W., 5 th P.M.

STATE OF MINNESOTA, County of MURRAY

At the corner location shown on the sketch:

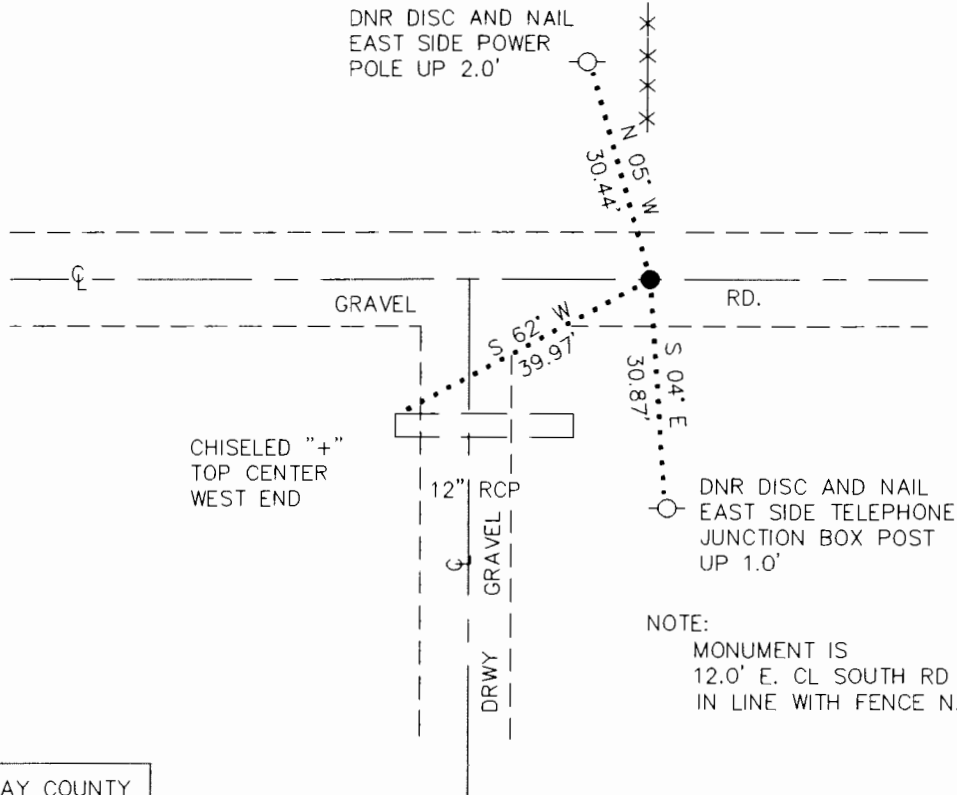
On _____ found a _____
DATE

left monument as found, lowered monument, removed monument (explain)

On 9/14/92 Placed a 3/4" X 24" REBAR WITH ALUMINUM CAP STAMPED
DATE "MN DNR SURVEY MARKER," DOWN 0.5'



SKETCH OF REFERENCE TIES



1983 MURRAY COUNTY
COORDINATE SYSTEM
N = 121249.997
E = 471665.214

BEARINGS OBSERVED WITH COMPASS

Statement of evidence relative to this corner location is on back of page.

10/7/92
WMA01187.00.00.01

I hereby certify that this document and the data contained herein was prepared by me or under my direct supervision.

Lowell R. Pommeroy 10-26-92
SIGNATURE DATE

Registration No. 17005

Land Surveyor, Professional Engineer
 County Surveyor, County Engineer

OFFICE OF THE COUNTY RECORDER

County of MURRAY

I hereby certify that this document was filed in the Co. recorders office at 7 1992 .M. on the _____ day of _____, 19____

County Recorder *James V. Johnson*

By _____, Deputy

DOCUMENT NO. _____

North Quarter Corner Section 15, Township 105 North, Range 42 West

The DNR Bureau of Engineering contacted the following offices for information on this corner:

MN Secretary of State
Murray County Recorder and Highway Engineer
Moseng Land Surveying at Marshall
Madsen Land Surveying at Fairmont

1861 The U.S. General Land Office notes, on file in the Secretary of State's Office, show the corner marked with a post, made mound with trench and pits as per instructions.

1992 August 20, the DNR Bureau of Engineering conducted a search for this corner, but found no evidence of a monument in an east-west road. Computed the lost position for this and found it to be 2611.63 ft. from adjoining section corners. Hired a backhoe operated by Dudley Johnson of Johnson Ditching and Plumbing of Lake Wilson to dig for evidence of the corner. Dug a 10 ft. east-west by 8 ft. north-south hole center on the east-west road and lost position distances, to a depth of 3 ft. Found a 3" dia. by 30" long wood stake. The origin of the stake could not be determined.

September 15, located the intersection of fence line north and the east-west road. This intersection was found to measure:

2524.55 ft. from the northwest corner Section 15

2698.71 ft. from the northeast corner Section 15

Hired Johnson Ditching and Plumbing to dig for evidence of the corner at the above mentioned intersection. Dug a 8 ft. east-west by 5-7 ft. north-south hole. Encountered natural ground down 6", dug to a depth of 3 ft. but found nothing. Spoke with former landowner Henry Kruen, who stated the fence line to the north in Section 10 is at least 75 years old. Landowner to the south of this corner has lived here since 1971 and has considered the fence to be the line.

A review of ownership on township plats and with current owners shows the north-south quarter line of Section 10 to be a long standing property line. Property ownership in Section 10 is shown to be 80, 160 and 240 acre parcels. There is no occupation to the south as the ownership in Section 15 has been strictly north and south halves of the section (320 acre parcels). The fence line in Section 10 runs the entire length of Section 10, being a woven wire fence with a single strand of barb wire and steel fence posts.

Analysis of the available information led the DNR Bureau of Engineering to conclude that the intersection of the fence line north and centerline of east-west road marks the location of the corner. A long standing line of occupation had to have some sort of origin, either a knowledge of a corner location or a mutually agreed upon location.